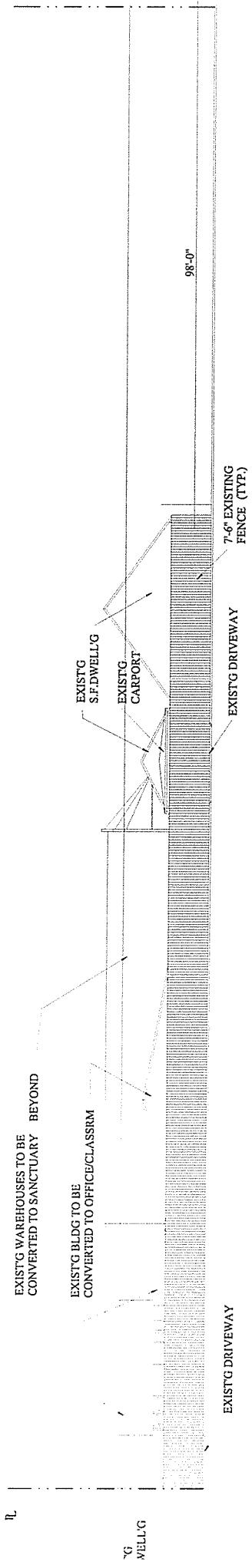


**FRONT ELEVATION**

SC: 1/16" = 1'-0"



SYRACUSE ST.

LEFT ELEVATION

SC: 1/32" = 1'-0"



BARREL SHAPPED  
ROOF BEYOND

FACADE WALL BEYOND

EXIST'G WAREHOUSE TO BE  
CONVERTED TO SANCTUARY

10'-0"

8'-8"

8'-01"

CLASSROOMS

CLASSRM/OFFICE

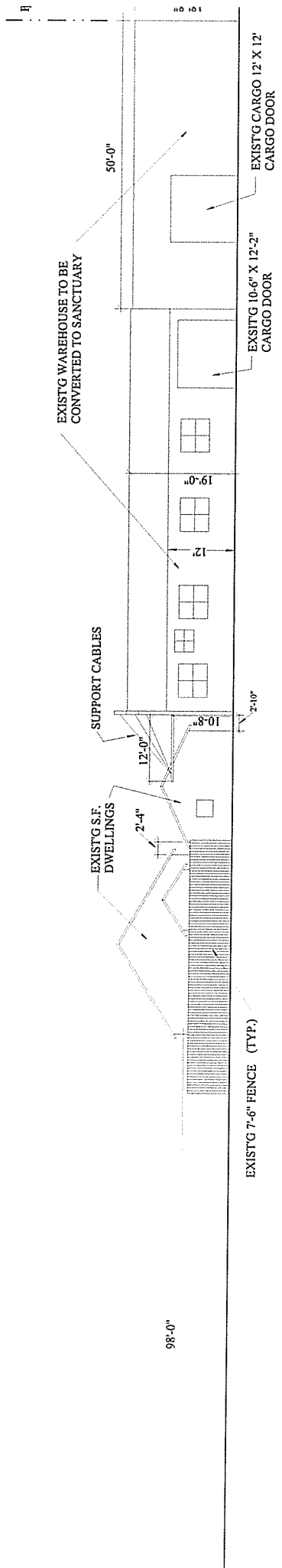
EXIST'G 7'-6" FENCE (TYP.)

EXIST'G S.F. DWELL'G

28'-0"

## REAR ELEVATION

SC: 1/16" = 1'-0"



RIGHT ELEVATION

SC. 132" = 1'-0"